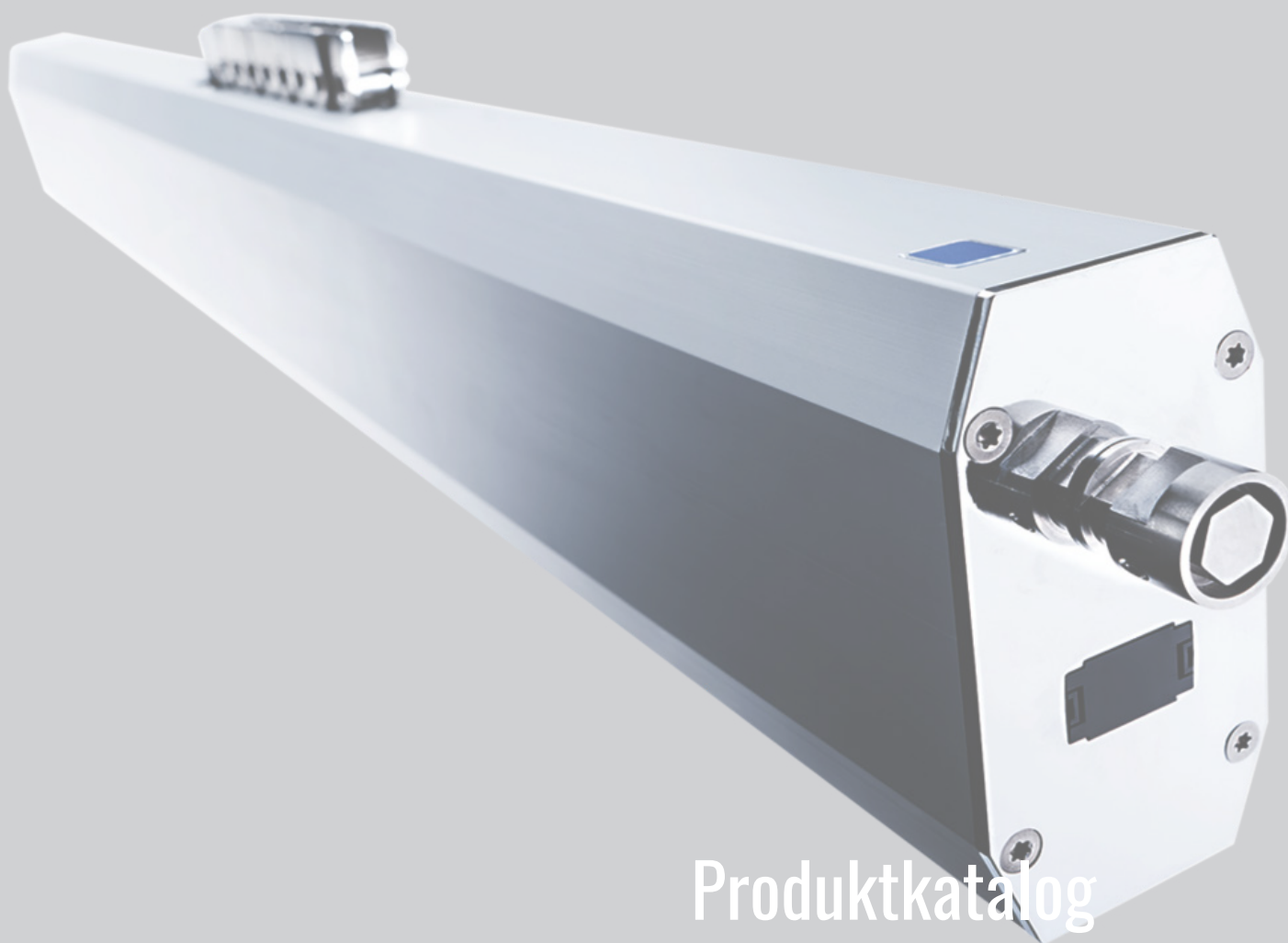


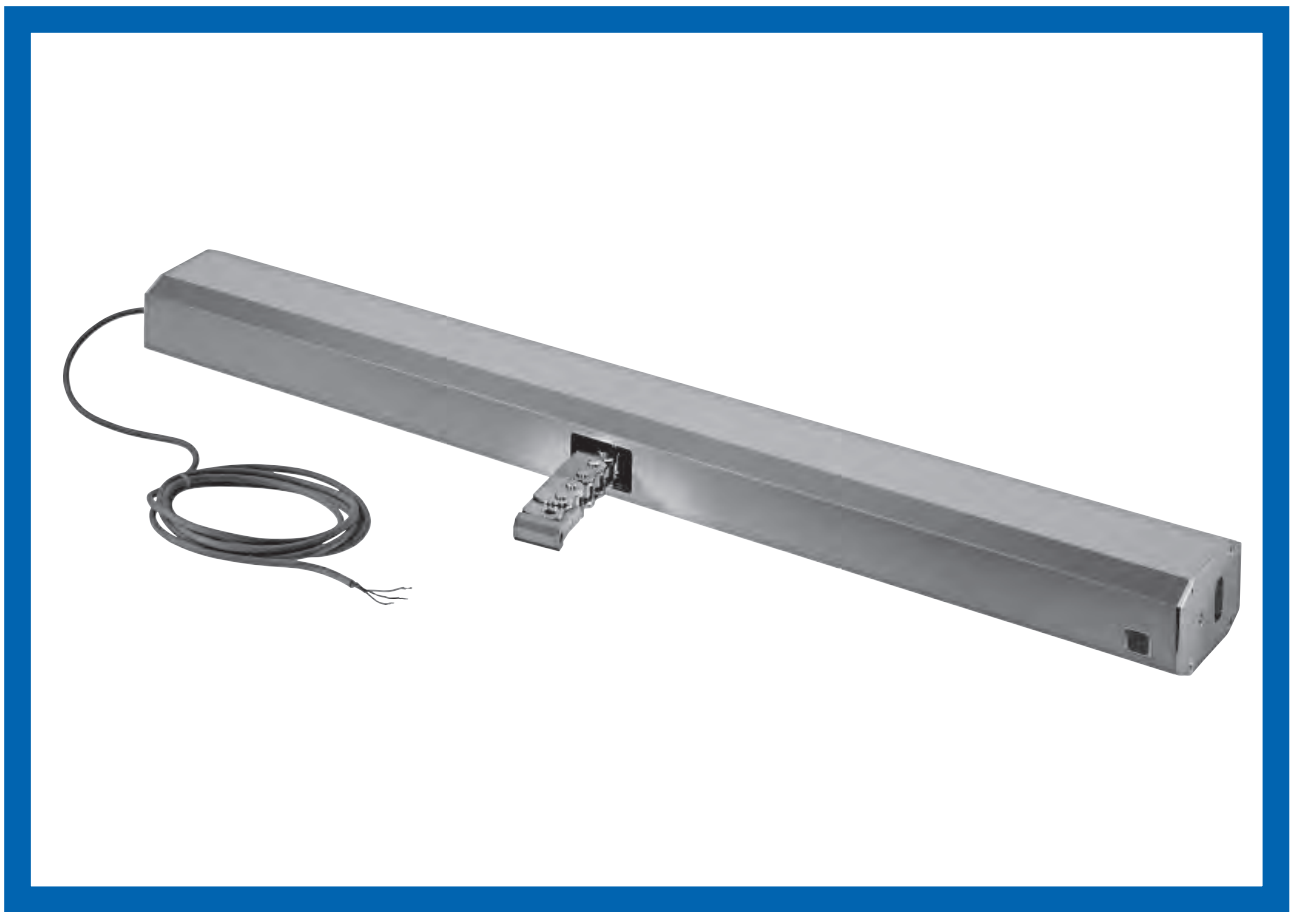
MBM || MAB



Produktkatalog

Kædemotorer KS15

Oktober 2020



PRODUCT FEATURES KS15

- For natural ventilation, smoke and heat exhausting systems and ferralux® NSHEV (EN12101-2)
- Aluminium housing anodized or optionally in RAL colors
- High-quality, robust and nickel-plated steel chain
- Symmetrical chain output
- Short design with 3-fold wound chain and especially quiet running
- Feedback limit position „CLOSE“ (max. 24V, 500 mA)
- Programmable parameters of Intelligent Control Electronics S12:
 - Feedback limit position „OPEN“ (max. 24V, 500 mA)
 - Synchronised multi-operation and sequence control without add. devices
 - Electronic soft-start, soft-close and soft-stop at end of stroke control
 - Stroke, force, speed
 - Rebate control
- Integrated plug solution

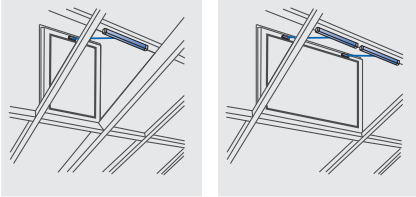
For this product series, a Type III Environmental Product Declaration (EPD) was issued according to ISO 14025 and EN 15804.

The LCA results of the different product types are listed at the end of this product catalogue.

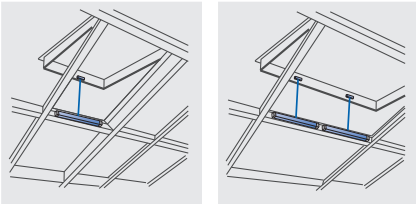
The EPD documents can be viewed or downloaded from our homepage www.aumueller-gmbh.de.

ROOF

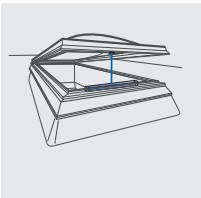
Bottom-hung



Top-hung

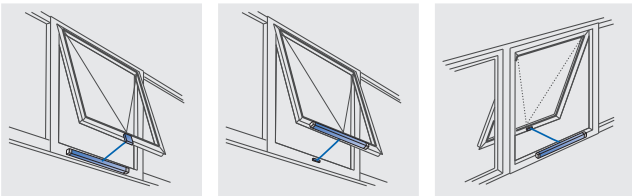


Sky light



FACADE

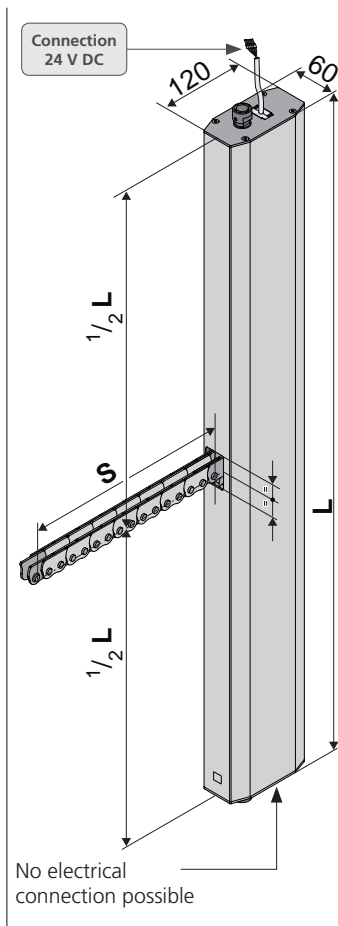
Top-hung



- Application: natural ventilation, SHEV ferralux®-NSHEV
- Symmetrical chain output
- Internal Intelligent Control Electronics S12
- Feedback limit position „CLOSE“ (max. 24V, 500 mA)
- Integrated plug solution

Options

- Programmable special functions
- Programmable feedback limit position „OPEN“ (max. 24V, 500 mA)
- M-COM for automatic synchronised run of multi drive systems and automatic sequence control with locking drives (S3 / S12)



TECHNICAL DATA

U_N	Rated voltage	24V DC (19 V ... 28 V)
I_N	Rated current	3,75 A
I_A	Cut-off current	5 A
P_N	Rated power	90 W
DC	Duty cycle	5 cycles (ED 30 % - ON: 3 min./OFF: 7 min.)
	Protection rating	IP 32
	Ambient temperature range	-5 °C ... +60 °C
F_Z	Pulling force max.	<ul style="list-style-type: none"> • 300N to 1.500N freely adjustable • preset 1500N, soft run 300N
F_A	Pushing force max.	1.500 N, to 1.000 mm linear
F_H	Pullout force	5.000 N (fastening depended)
	Chain	High-quality, robust and nickel-plated steel chain
	Connecting cable	non-halogen, grey, \varnothing 9 mm, 5 x 1 mm ² , ~ 3 m
v	Speed	<ul style="list-style-type: none"> • 5,0 mm/s to 17 mm/s, freely adjustable • preset 17 mm/s
s	Stroke	250 – 1000 mm
L	Length	see order data
	Feedback contact	limit position „CLOSE“ (max. 24V, 500 mA)
	Sound pressure level	\leq 70 dB (A)

ORDER DATA							
s [mm]	L [mm]	Version	Finish	PU / pcs.	Part.-No.		
Drives							
800	800	KS15 800 S12 24V	E6/C-0	1	525380		
1000	920	KS15 1000 S12 24V	E6/C-0	1	525400		
Set: Frame bracket and casement bracket (kit)							
Set:	Frame bracket and casement bracket (kit)		K153: Stainless steel, rolled	1	524080		
consists:	frame bracket K153 and casement bracket F54		F54: Aluminium, E6/C-0				

OPTIONEN							
Special model				PU / pcs.	Part.-No.		
Drive housing painted/powder coated in other RAL colours							
Lump sum for coating						516030	
Specify at order stage:				1 – 20	516004		
				21 – 50	516004		
				51 – 100	516004		
				ab 101	516004		
Plug solution:							
AUMÜLLER-Click plug solution - 5 m – non-halogen, grey – 5 x 1,0 mm ²							
Microprocessor programming S12							
Electronic stroke reduction 24V S12						524190	
Programming drives 24V / 230V S12						524180	
Optional accessories				PU / pcs.	Part.-No.		
M-COM Configuration module for synchronised multi-drive systems				1	524177		

MBM || MAB

Bilstrupvej 2
7800 Skive
Danmark

Tel +45 70 20 66 70
info@mbm-mab.dk

www.mbm-mab.dk



BESØG
vores hjemmeside på
mbm-mab.dk